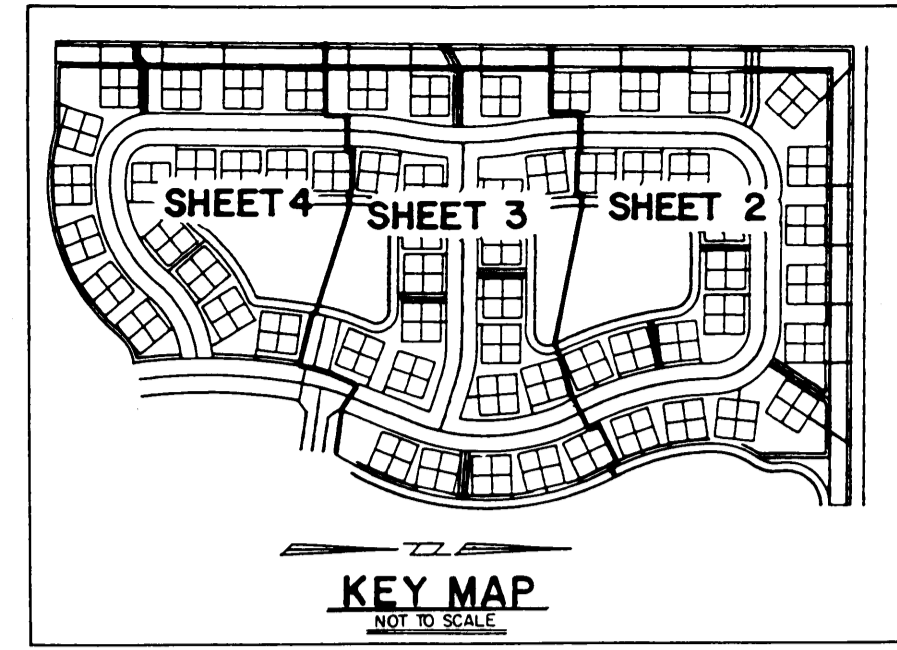
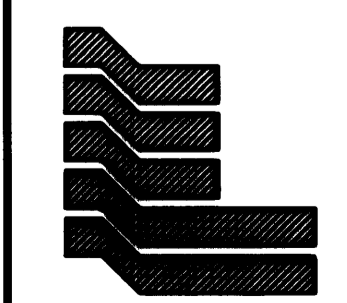
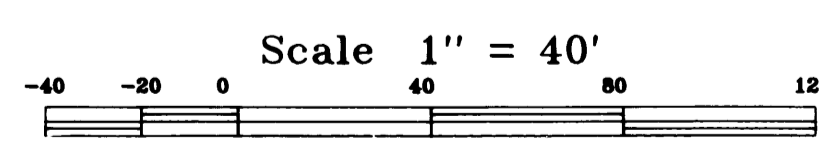
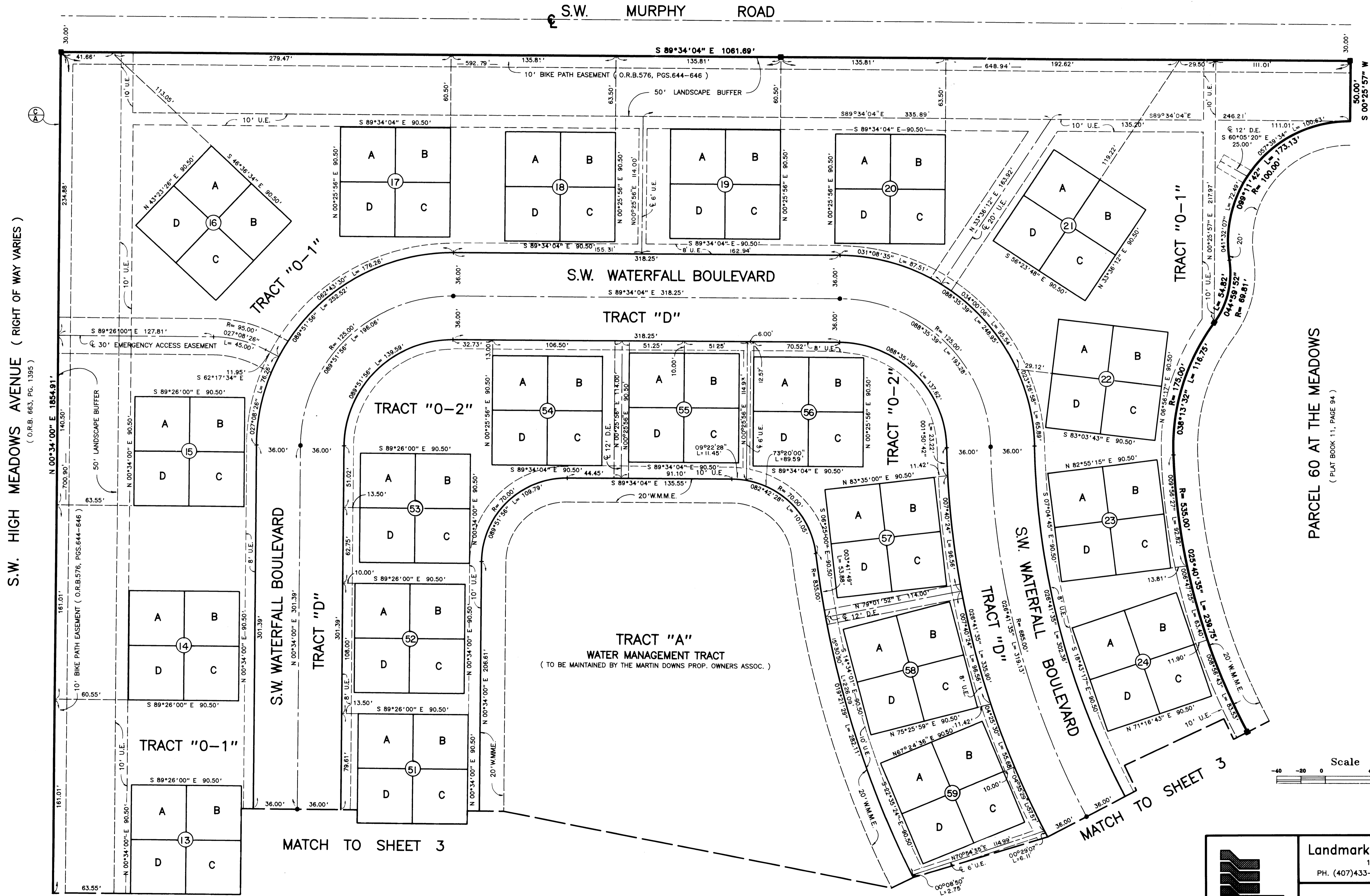
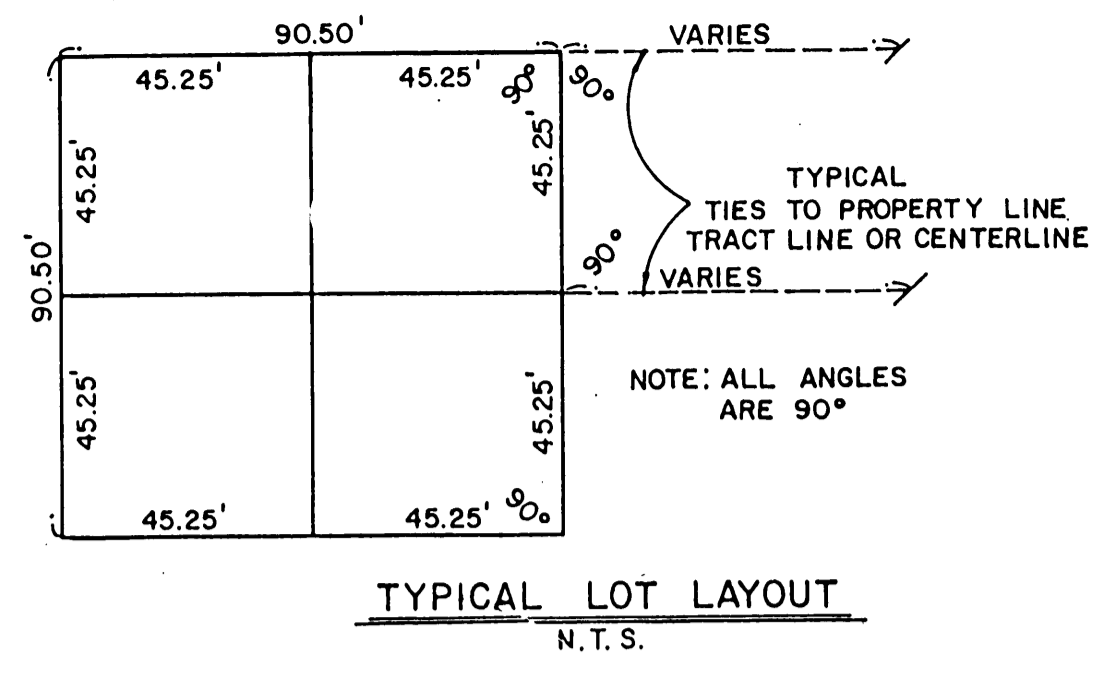


A PLAT OF PARCEL 62-A AT THE MEADOWS

BEING PLAT NO. 57 OF MARTIN DOWNS A P.U.D. ALSO BEING A REPLAT OF
PARCEL 62 AT THE MEADOWS BEING PLAT NO. 54 OF MARTIN DOWNS A P.U.D.
AS RECORDED IN P.B. 12, PG. 17, PUBLIC RECORDS OF MARTIN COUNTY, LYING IN
SECTION 12, TOWNSHIP 38 SOUTH, RANGE 40 EAST, MARTIN COUNTY, FLORIDA.
SHEET 2 OF 4
OCTOBER, 1990



I, MARSHA STILLER, CLERK OF
THE CIRCUIT COURT OF MARTIN
COUNTY, FLORIDA, HEREBY CERTIFY
THAT THIS PLAT WAS FILED FOR
RECORD IN PLAT BOOK 12,
PAGE 78, MARTIN COUNTY,
FLORIDA, PUBLIC RECORDS, THIS
4TH DAY OF February,
A.D. 1991.
MARSHA STILLER, CLERK OF
CIRCUIT COURT
MARTIN COUNTY, FLORIDA
By: _____
DEPUTY CLERK
FILE NO. 866872



Landmark Surveying & Mapping Inc.
1850 FOREST HILL BOULEVARD
PH. (407)433-5405 SUITE 100 W.P.B. FLORIDA
PARCEL 62-A AT THE MEADOWS